

TECHNICAL INFORMATION MANUAL

Revision 4 – 09 October 2019

Tile R1250I

Compact UHF RFID Desktop Reader



Visit the [Tile R1250I](#) web page, you will find the latest revision of data sheets, manuals, certifications, technical drawings, software and firmware. All you need to start using your reader in a few clicks!

Scope of Manual

The goal of this manual is to provide the basic information to work with the **Tile R1250I Compact UHF RFID Desktop Reader**.

Change Document Record

Date	Revision	Changes	Pages
24 Nov 2015	01	First release	-
25 May 2018	02	Modified <i>Startup RF Power</i> paragraph	19
		Modified <i>Regulatory Compliance</i> chapter	29÷31
		Modified <i>Product Description</i> paragraph	6
		Modified <i>Radiation Patterns</i> paragraph	27
09 Apr 2019	03	Modified reader photo	1, 6, 23
		Modified <i>Connecting the Tile R1250I Reader using the EasyController</i> paragraph	13
		Modified <i>CE Compliance, Tile CE Declaration of Conformity</i> paragraph	30, 31
09 Oct 2019	04	Modified <i>Ordering Options</i> paragraph	10

Reference Document

- [RD1] CMC Centro Misure Compatibilità s.r.l. - Report Federal Communication Commission (FCC) - R1250IU - Quark Up- 500mW UHF RFID Ultra compact module with USB Interface. Test report n. R14138301 Rev.1.0 - 08 July 2015
- [RD2] EPCglobal: EPC Radio-Frequency Identity Protocols Class-1 Generation-2 UHF RFID Protocol for Communications at 860 MHz - 960 MHz, Version 2.0.1 (April, 2015).

CAEN RFID srl

Via Vetraia, 11 55049 Viareggio (LU) - ITALY
Tel. +39.0584.388.398 Fax +39.0584.388.959
info@caenrfid.com
www.caenrfid.com

© CAEN RFID srl – 2019

Disclaimer

No part of this manual may be reproduced in any form or by any means, electronic, mechanical, recording, or otherwise, without the prior written permission of CAEN RFID.

The information contained herein has been carefully checked and is believed to be accurate; however, no responsibility is assumed for inaccuracies. CAEN RFID reserves the right to modify its products specifications without giving any notice; for up to date information please visit www.caenrfid.com.

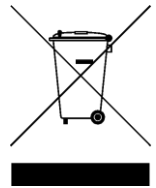
Federal Communications Commission (FCC) Notice

This device was tested and found to comply with the limits set forth in Part 15 of the FCC Rules. Operation is subject to the following conditions: (1) this device may not cause harmful interference, and (2) this device must accept any interference received including interference that may cause undesired operation. These limits are designed to provide reasonable protection against harmful interference when the equipment is operated in a commercial environment.

This device generates, uses, and can radiate radio frequency energy. If not installed and used in accordance with the instruction manual, the product may cause harmful interference to radio communications. Operation of this product in a residential area is likely to cause harmful interference, in which case, the user is required to correct the interference at their own expense. The authority to operate this product is conditioned by the requirements that no modifications be made to the equipment unless the changes or modifications are expressly approved by CAEN RFID.

Disposal of the product

Do not dispose the product in municipal or household waste. Please check your local regulations for disposal/recycle of electronic products.



Index

Scope of Manual	2
Change Document Record	2
Reference Document	2
Index	4
List of Figures	4
List of Tables	4
1 INTRODUCTION	6
Product Description	6
Accessories	8
Installation Notice	8
External Interface Description	9
Front Panel LEDs	9
Ordering Options	10
2 GETTING STARTED	11
Introduction	11
Serial Port Emulator	11
Driver installation	11
Connecting the Tile R1250I Reader using the EasyController	13
3 CONFIGURATION	17
Introduction	17
Reader Configuration Menu	17
Active Profile	18
Startup RF Power	19
HID Keyboard	19
HID format	20
HID scan delay	20
4 HID PROFILE	21
Introduction	21
Making Inventory	21
5 READER UPGRADE	23
Firmware Upgrade	23
6 TECHNICAL SPECIFICATIONS	26
Technical Specifications Table	26
Reader – Tag Link Profiles	27
Radiation Patterns	27
7 REGULATORY COMPLIANCE	29
FCC Compliance	29
CE Compliance	30
RoHS EU Directive	30
Tile CE Declaration of Conformity	31
Tile FCC Grant	32

List of Figures

Fig. 1.1: Tile R1250I Compact UHF RFID Desktop Reader – Black	6
Fig. 1.2: Tile R1250I Compact UHF RFID Desktop Reader – Black Flanged	7
Fig. 1.3: Tile R1250I Accessories	8
Fig. 1.4: Tile R1250I (standard enclosure) mechanical drawing	8
Fig. 1.5: Tile R1250I (flanged enclosure) mechanical drawing	9
Fig. 1.6: Tile R1250I Front Panel LEDs	10
Fig. 6.1: Tile R1250IE Radiation pattern H plane	27
Fig. 6.2: Tile R1250IE Radiation pattern V plane	27
Fig. 6.3: Tile R1250IU Radiation pattern H plane	28
Fig. 6.4: Tile R1250IU Radiation pattern V plane	28

List of Tables

Tab. 1.1: Tile R1250I Front Panel LEDs	9
--	---

Tab. 6.1: Tile R1250I Technical Specifications 26
Tab. 6.2: Tile R1250I Reader to tag link profiles 27

1 INTRODUCTION

Product Description

The Tile (model R1250I), desktop reader of the easy2read[®] family, is a RAIN RFID reader with integrated antenna for short to medium range applications.

The reader is powered and controlled directly by an USB cable, thus allowing to read RAIN RFID tags in an easy desktop environment.

Thanks to its compact size, the Tile reader is the perfect choice for various applications such as point-of-sales, document tracking, tag programming stations, access control and so on. It can also be used as a building block for smart shelves and smart displays.

The Tile reader supports the HID profile (native keyboard emulation) allowing to interact directly with legacy application, office automation SW or any other generic solution requiring manual input.

Being compliant with both European and US regulatory environments, the Tile reader allows installations in various countries worldwide as needed by retailers, forwarders, warehouses and other global organizations.

The core components of the Tile reader are the CAEN RFID [QuarkUp](#) module, a top performing ultra-compact UHF RFID module, and the Quad, a compact circular polarized antenna designed by CAEN RFID.



Fig. 1.1: Tile R1250I Compact UHF RFID Desktop Reader – Black



Fig. 1.2: Tile R1250I Compact UHF RFID Desktop Reader – Black Flanged

Accessories

Check for the supplied accessories below:



Fig. 1.3: Tile R1250I Accessories

Installation Notice

The Tile R1250I can be easily placed on a table for desktop applications or it is possible to hang it on the wall (only for the model with flanged enclosure).

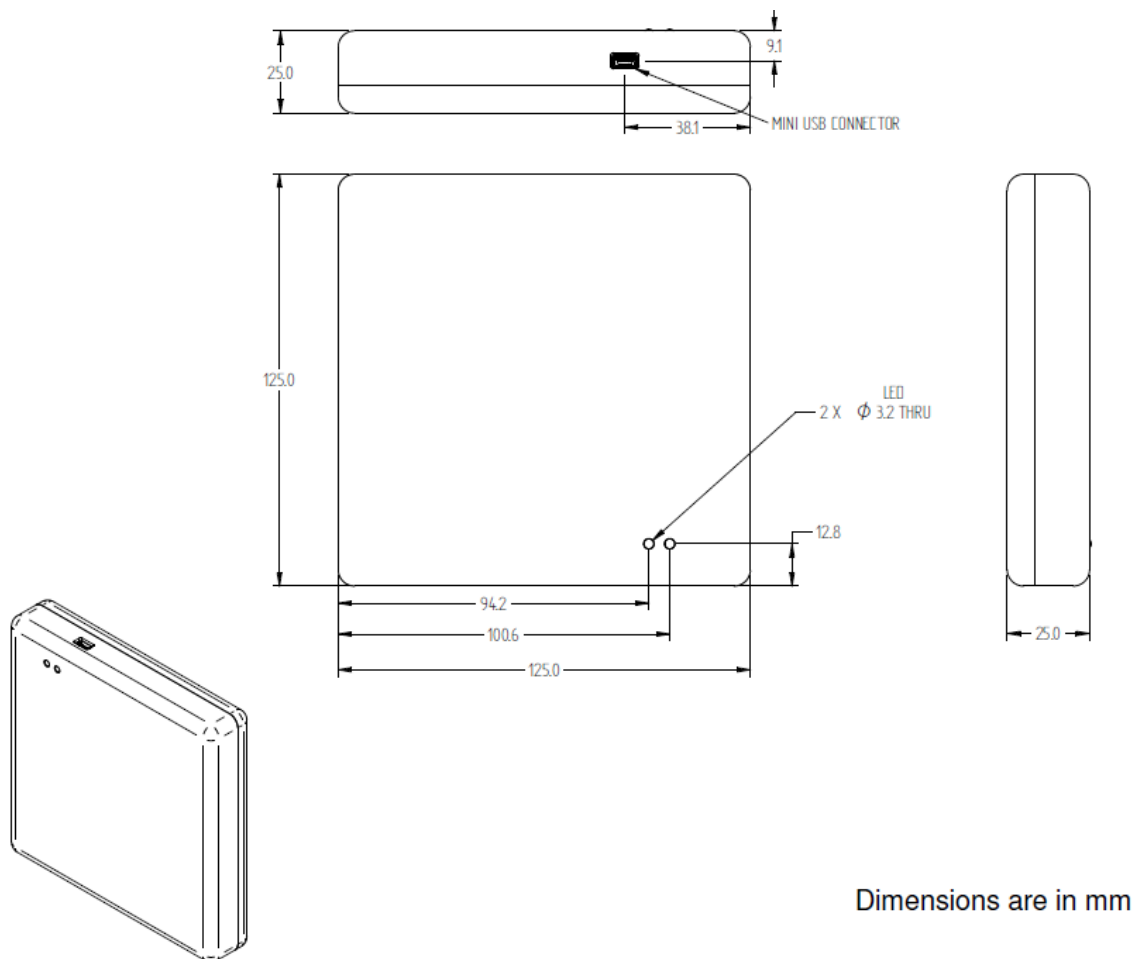


Fig. 1.4: Tile R1250I (standard enclosure) mechanical drawing

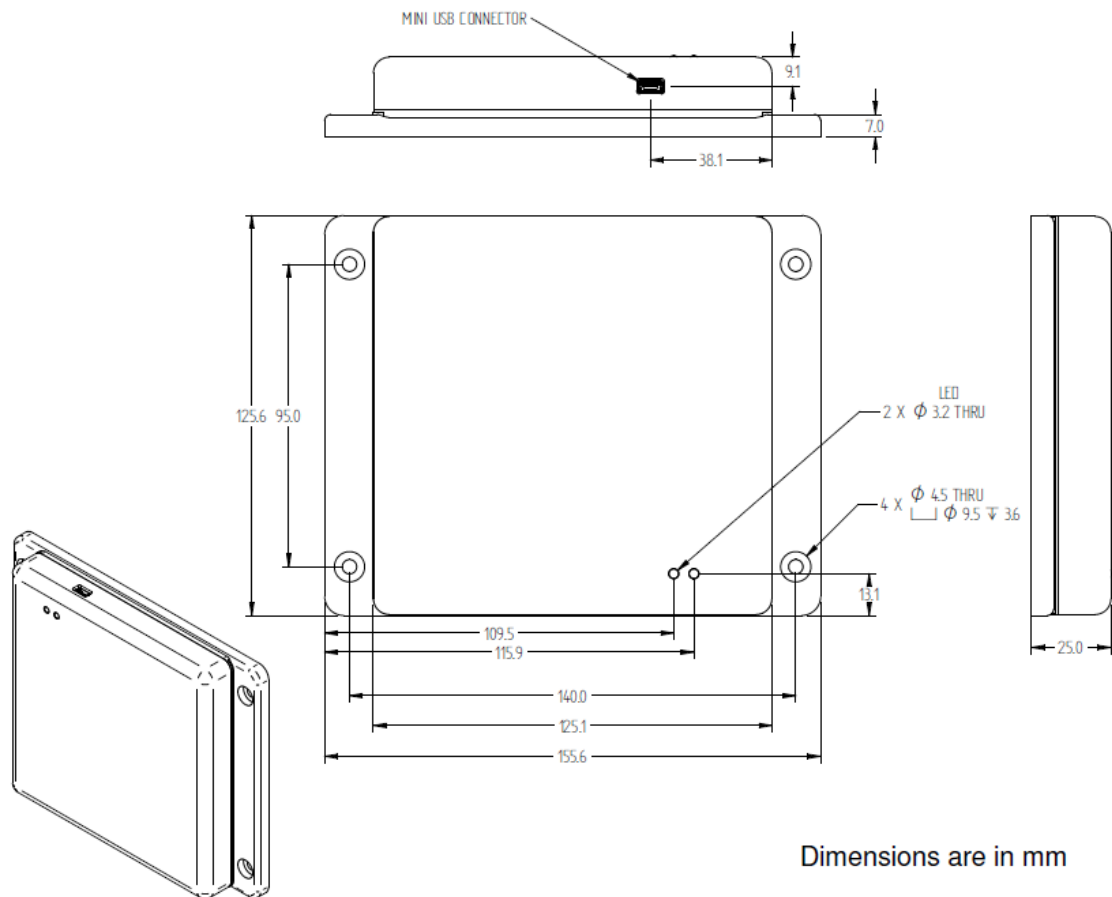


Fig. 1.5: Tile R1250I (flanged enclosure) mechanical drawing

External Interface Description

The Tile R1250I external connection is via USB port.

The mini USB connector is located in the front edge of the Tile. You **shall** use a dual USB cable and connect the reader to two USB ports (see § *Accessories* page 8).

The Tile R1250I is powered through the USB host.

Front Panel LEDs

The Tile R1250I front panel houses the following LEDs (see § *Fig. 1.6: Tile R1250I Front Panel LEDs* page 10):

LED	FUNCTION	TYPE
PWR	Power ON	Red LED
TAG-ID	Tag detection	Blinking Green LED

Tab. 1.1: Tile R1250I Front Panel LEDs

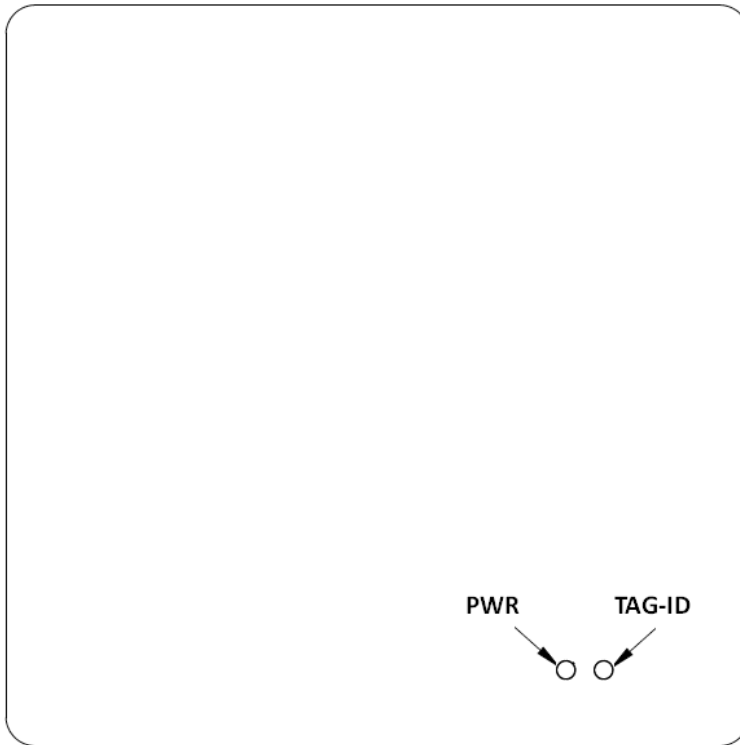


Fig. 1.6: Tile R1250I Front Panel LEDs

Ordering Options

	Code	Description
Reader	WR1250IEXBAA	R1250IE - Tile - Black - Compact UHF RFID Desktop Reader (ETSI)
	WR1250IEXBFL	R1250IE - Tile - Black Flanged - Compact UHF RFID Desktop Reader (ETSI)
	WR1250IUXBAA	R1250IU - Tile - Black - Compact UHF RFID Desktop Reader (FCC)
	WR1250IUXBFL	R1250IU - Tile - Black Flanged - Compact UHF RFID Desktop Reader (FCC)

R

2 GETTING STARTED

Introduction

This quickstart guide will help you to get started with your Tile R1250I reader.

The reader can be configured in two different profiles:

- **EASY2READ** (factory default): choosing this option you select the CAEN RFID easy2read communication protocol. Select this option in order to control the reader using the [CAEN RFID Easy Controller Application](#) or the [SDK \(Software Development Kits\)](#) library. For details on the use with the EASY2RD profile please refer to this quickstart guide.
- **HID**: choosing this option you select the keyboard emulation protocol. For details on the use on the HID profile please refer to § *HID PROFILE* chapter page 21.

The reader is sold with the factory profile set to EASY2RD. This guide helps you to getting started with your reader using the EASY2READ profile.

For more detailed information on reader configuration, connections and setup options please refer to the next chapters.

To begin, you need first to download and install the [.NET framework 2.0](#) (only required if .NET is not already installed on your PC).

Serial Port Emulator

The Tile R1250I reader can be connected to a PC using the provided Y USB cable and it is detected by the PC as an emulated serial port. In order to correctly operate with the reader you need to install the CAEN RFID driver.

Driver installation

You can download the required driver from the CAEN RFID Web Site at [Tile R1250I web page](#) or in the [SW/FW area](#).

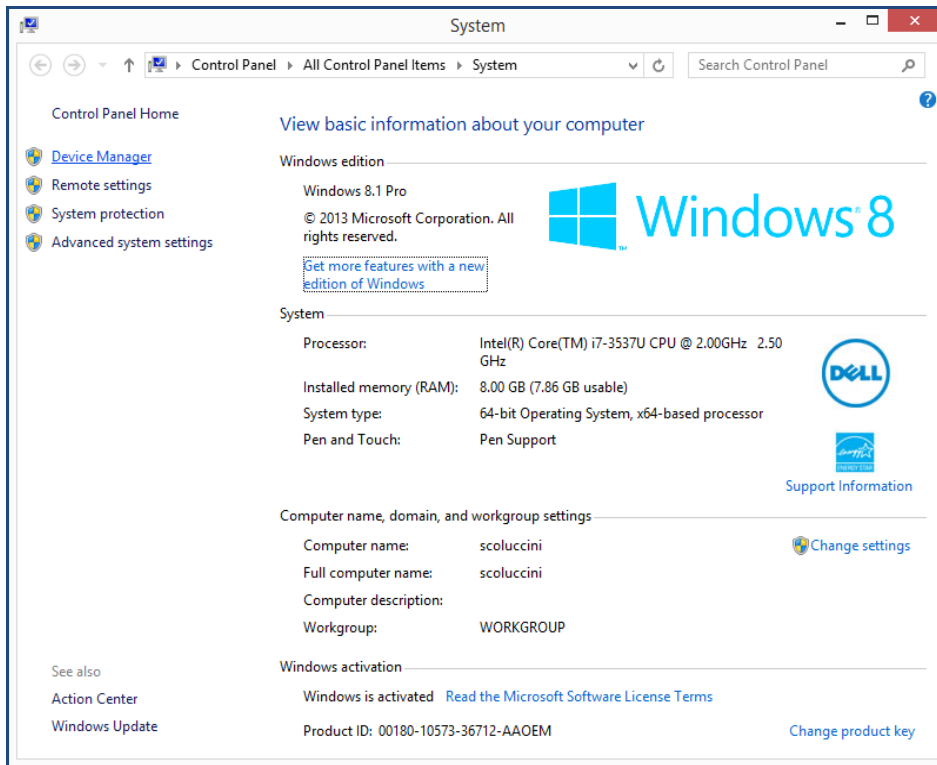
The procedure to install the USB driver is presented below:

1. Verify that the Y USB cable provided with the reader is correctly plugged into the PC

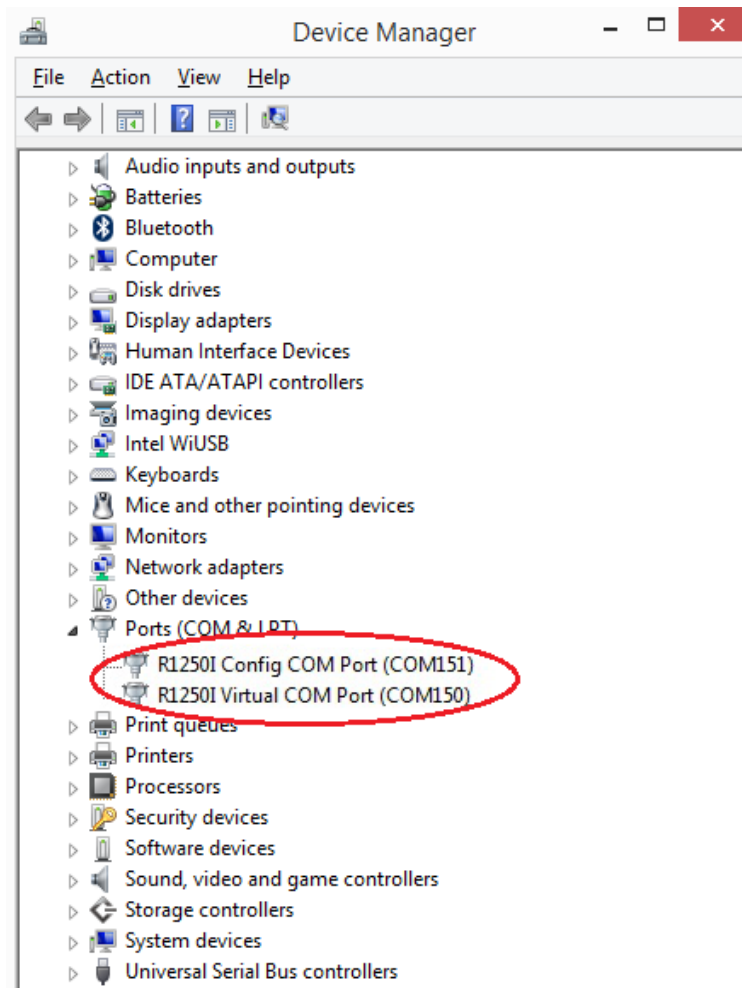


Warning: You shall use a dual USB cable and connect the pc to both USB ports.

2. Install the CAEN RFID driver (download it at [Tile R1250I web page](#) or in the [SW/FW area](#) of the CAEN RFID web site).
3. Open the System properties: go to *Control Panel* → *All Control Panel Items* → *System* and click on *Device Manager*.



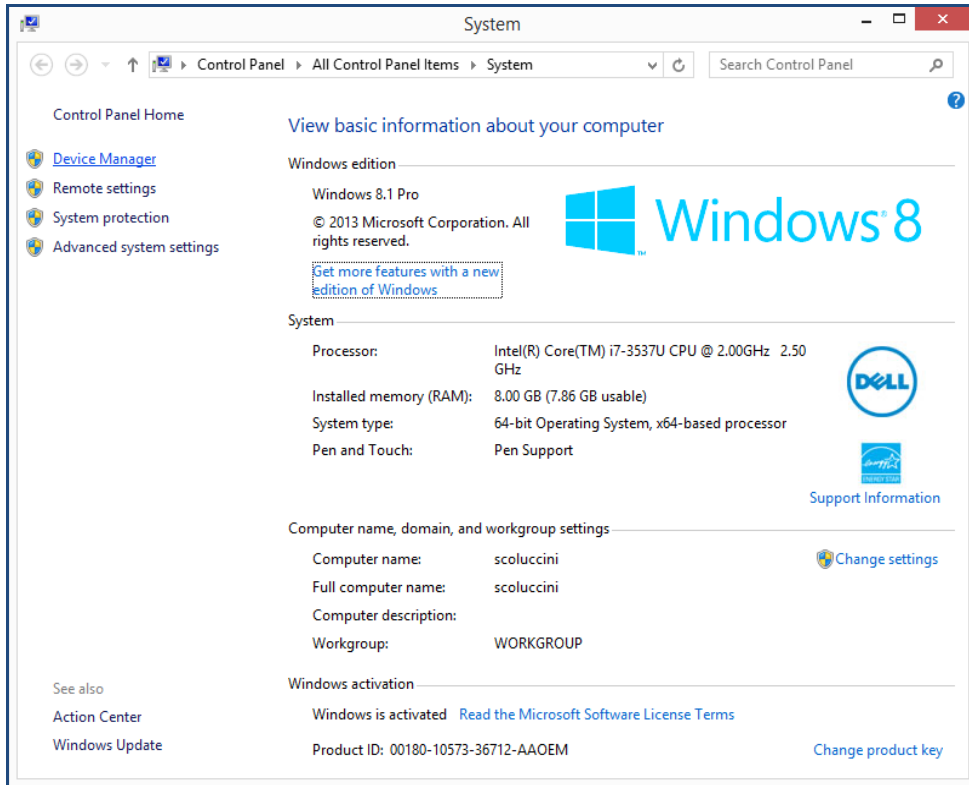
4. After having installed the driver, the reader is detected by the PC as two emulated serial ports (a Virtual COM Port and a Config COM Port):



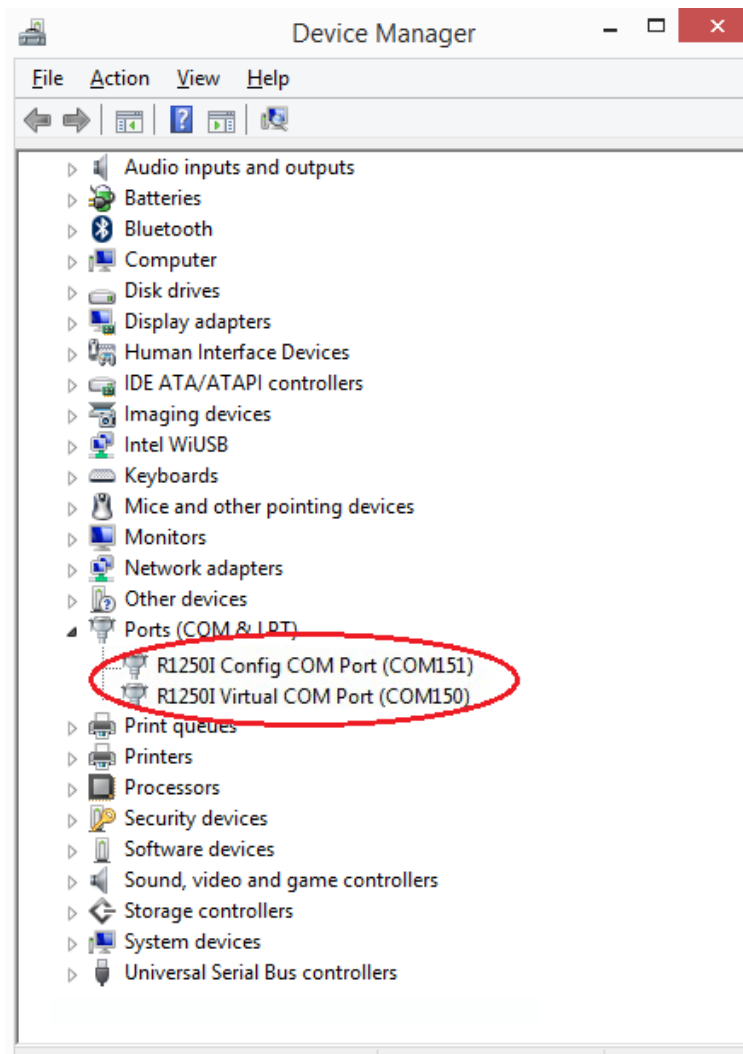
Connecting the Tile R1250I Reader using the EasyController

Using the EASY2READ profile, you can connect to the Tile R1250I Reader using the *EasyController* software via USB connection.

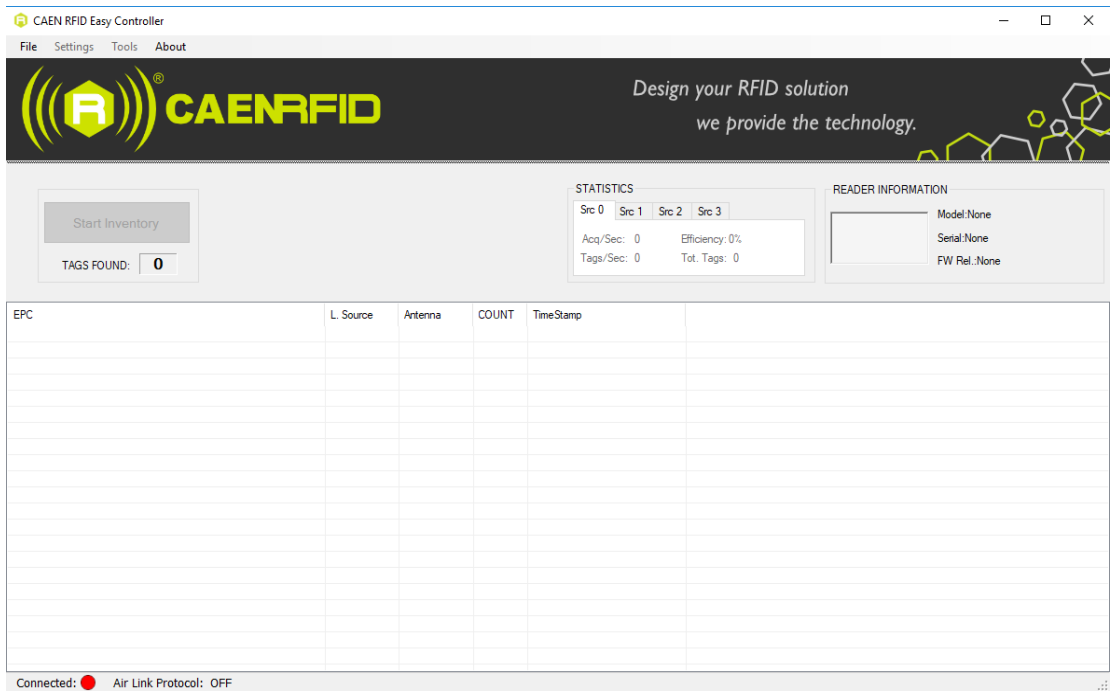
1. Download the latest version of the *EasyController software* for Windows from the [Tile R1250I](#) web page, *Downloads* section and install it.
2. Connect the Tile reader to your pc using the Y USB connection.
3. Open the System properties (right click on *My computer* icon) → *All Control Panel Items* → *System* and click on *Device Manager*.



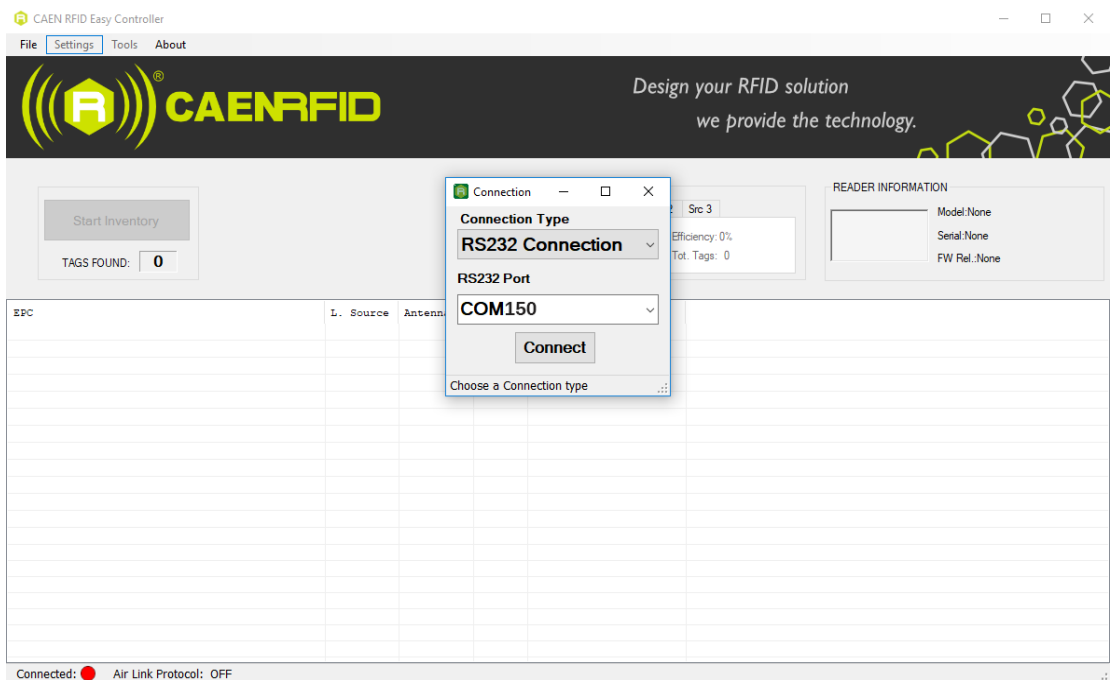
4. After having installed the driver (see § *Driver installation* page 11), the reader is detected by the PC as two emulated serial port. See the Virtual COM Port, in the case below COM150:



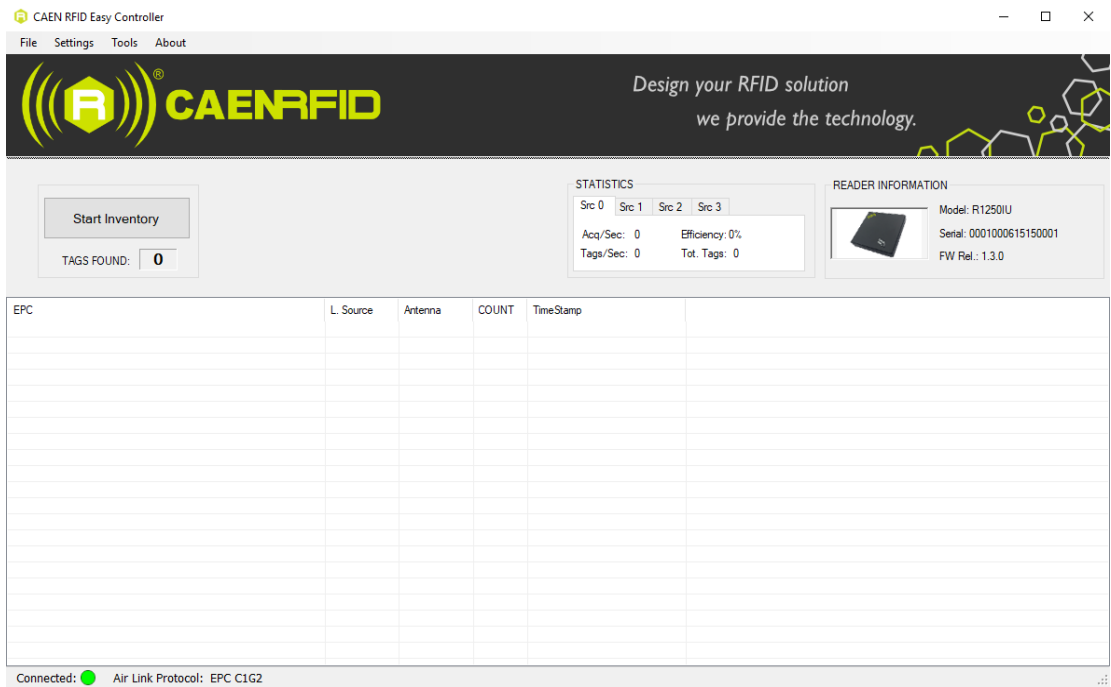
- Once the serial port connection is established, CAEN RFID *EasyController* software can be used to interface the reader. Launch the *EasyController* by double clicking on the icon on your desktop:



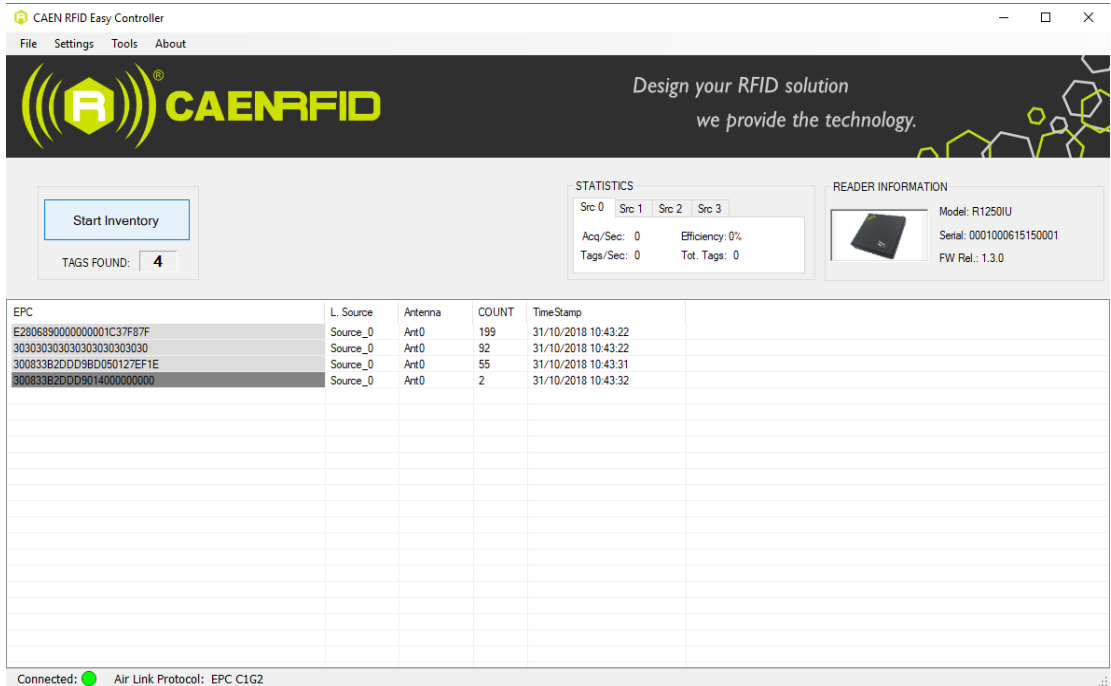
- Click on *File* → *Connect*, select the RS232 Connection Type and select from the pull-down menu the COM port number where the driver has mapped the virtual port for the Tile (in the example COM150) and then click on **connect**.



- To verify if the connection with the reader has been established, check the green dot on the bottom left side of the sidebar. Into the *READER INFORMATION* box you can find information on reader model, serial number and firmware release:



- Place a tag on the reader, click on *start inventory* and see the tag information displayed on the main window.



For more info on the use of the *EasyController*, please refer to its technical information manual (download it at the [Tile R1250I](#) web page, *Downloads* section or in the [Manuals & Documents](#) web area).

3 CONFIGURATION

Introduction

The Tile R1250I reader is detected by the PC as two emulated serial ports:

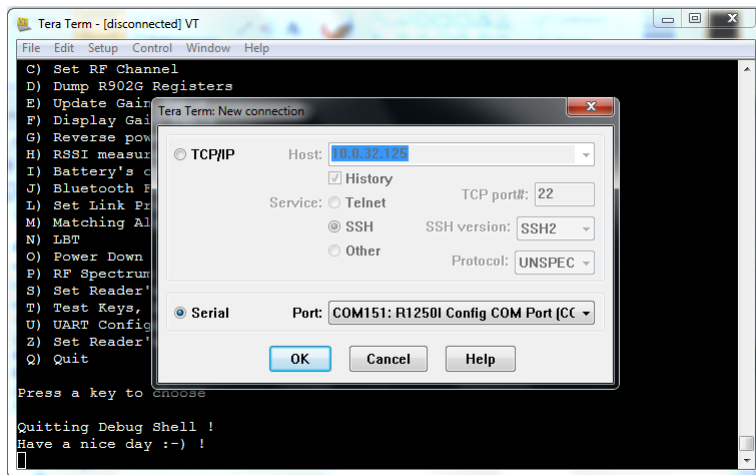
- Virtual COM Port
- Config COM Port

The Config COM Port is used to configure the reader profile.

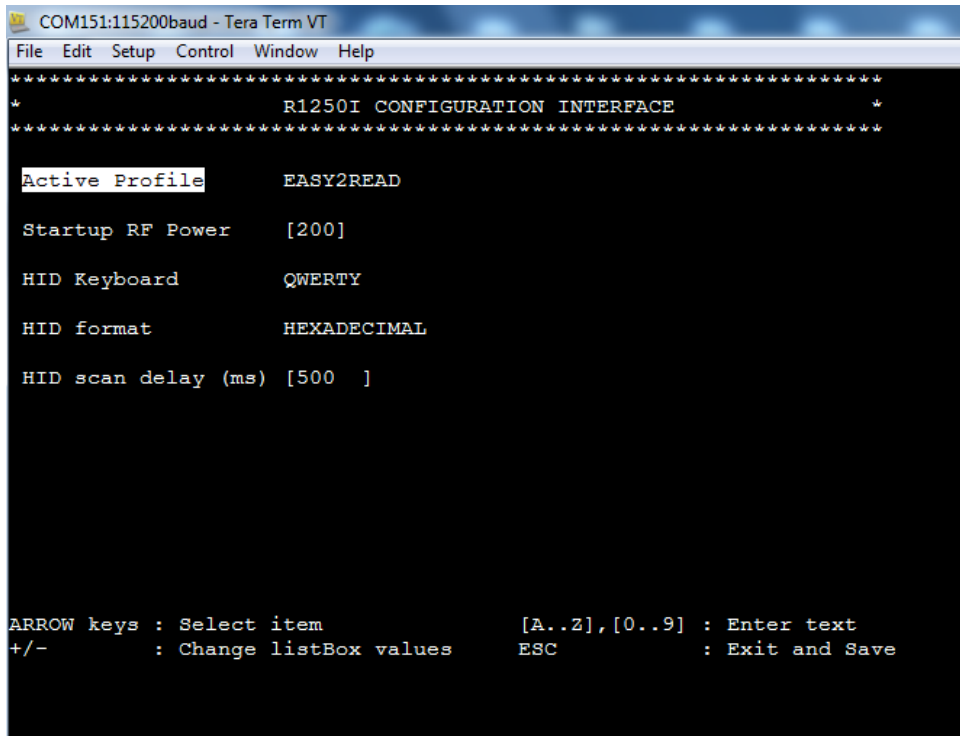
The Virtual COM Port is the main communication interface.

Reader Configuration Menu

1. Verify that the Y USB cable provided with the reader is correctly plugged into the PC
2. Install the required CAEN RFID USB driver as explained in § *Driver installation* page 11.
3. Open a serial terminal compatible with VT100 (e.g. Hyperterminal or TeraTerm).
4. Click on *File-> New Connection* and look for the *R1250I Config Port* (in the example COM151) and select it ->OK.



5. Press the "ESC" key to access the reader configuration menu:



The Tile R1250I menu options are the following:

- **Active profile**
- **Startup RF Power**
- **HID Keyboard**
- **HID format**
- **HID scan delay**

To scroll through the main menu press the arrow keys, to change the listBox values press the “-” or “+” keys and to exit and save press “ESC”.

Active Profile

Access the configuration menu as explained in the *Reader Configuration Menu* paragraph page 17.

Use the arrow keys to scroll through the main menu.

The *Active Profile* is the first option of the main menu.

The *Active Profile* options are the following:

- **EASY2READ** (factory default): choosing this option you select the CAEN RFID easy2read communication protocol. Select this option in order to control the reader using the [CAEN RFID Easy Controller Application](#) or the [SDK \(Software Development Kits\)](#) library. For details on the use with the EASY2RD profile please refer to § *GETTING STARTED* chapter page 11.
- **HID**: choosing this option you select the keyboard emulation protocol. For details on the use on the HID profile please refer to § *HID PROFILE* chapter page 21.

The reader is sold with the factory profile set to EASY2READ.

To activate a different profile, press the right arrow to select the *EASY2READ profile* (factory profile), then use the “-” or “+” keys until the desired profile is displayed (*EASY2READ* or *HID*). Press the *ESC* key to exit from the configuration interface and to save the new setting.

The display shows the message “*Configuration Saved*” to inform you that the new settings is active.

Disconnect the USB cable and connect the reader once again.

If you have set the HID profile, after 6 seconds the device starts making inventories and transferring the EPC codes to the host PC through the HID interface.

You can activate only one profile at a time.

Startup RF Power

Access the configuration menu as explained in the *Reader Configuration Menu* paragraph page 17.

Use the arrow keys to scroll through the main menu.

The *Startup RF Power* is the second option of the main menu.

The reader is sold with the factory *Startup RF Power* set to 200mW.

To set a different RF value, press the down arrow and then the right arrow to select the *Startup RF Power* value. Using the "backspace" key, delete the current value and insert the desired power value in the range 0-500. All values are expressed in mW.

Press the *ESC* key to exit from the configuration interface and to save the new setting.

The display shows the message "*Configuration Saved*" to inform you that the new settings is active.

Disconnect the USB cable and connect the reader once again.

You can activate only one power level at a time.

HID Keyboard

Access the configuration menu as explained in the *Reader Configuration Menu* paragraph page 17.

Use the arrow keys to scroll through the main menu.

The *HID Keyboard* is the third option of the main menu.

The *HID Keyboard* options are the following:

- **QWERTY**: standard keyboard.
- **AZERTY**: French keyboard

The reader is sold with the factory *HID keyboard* set to QWERTY.

To set a different keyboard, press the down arrow until "*HID Keyboard*" is displayed and then the right arrow to select the QWERTY option; use the "-" or "+" keys to shift between QWERTY and AZERTY. Press the *ESC* key to exit from the configuration interface and to save the new setting.

The display shows the message "*Configuration Saved*" to inform you that the new settings is active.

Disconnect the USB cable and connect the reader once again.

You can activate only one *HID Keyboard* at a time.

HID format

In the HID profile you can set different EPC format, while using the EASY2READ profile it is not possible to change the HEXADECIMAL EPC format.

Access the configuration menu as explained in the *Reader Configuration Menu* paragraph page 17.

Use the arrow keys to scroll through the main menu.

The *HID format* is the fourth option of the main menu.

The *HID format* options are the following:

- **HEXADECIMAL:** The RFID EPC is represented by hexadecimal digits
- **ASCII:** The RFID EPC is represented by ASCII characters
- **SGTIN14:** This is a special option, please contact our [support team](#) for more info

The reader is sold with the factory *HID format* set to HEXADECIMAL.

To set a different format, press the down arrow until "*HID format*" is displayed and then the right arrow to select the HEXADECIMAL option (factory format); use the "-" or "+" keys to select the desired format. Press the *ESC* key to exit from the configuration interface and save the new setting.

The display shows the message "*Configuration Saved*" to inform you that the new settings is active.

Disconnect the USB cable and connect the reader once again.

You can activate only one HID format at a time.

HID scan delay

The *HID scan delay* represents the delay between a scan and the subsequent.

Access the configuration menu as explained in the *Reader Configuration Menu* paragraph page 17.

Use the arrow keys to scroll through the main menu.

The reader is sold with the factory scan delay set to 500ms.

To set a different *HID scan delay*, press the down arrow until "*HID scan delay*" is displayed and then the right arrow to select the current value. Using the "Canc" key, delete the current value and insert the desired scan delay in the range 0-99999. All values are expressed in ms.

Press the *ESC* key to exit from the configuration interface and to save the new setting.

The display shows the message "Configuration Saved" to inform you that the new settings is active.

Disconnect the USB cable and connect the reader once again.

You can activate only one *scan delay* level at a time.

4 HID PROFILE

Introduction

Choosing the **HID** profile option you select the keyboard emulation protocol.

For details on the available profiles and on the activation method, please refer to § *Active Profile* paragraph page 18.

Making Inventory

If the reader is in the EASY2READ profile (factory profile), you need to install the CAEN RFID driver (refer to § *Driver installation* page 11) and then access the reader configuration menu to set the HID reader profile (refer to § *Active Profile* paragraph page 18).

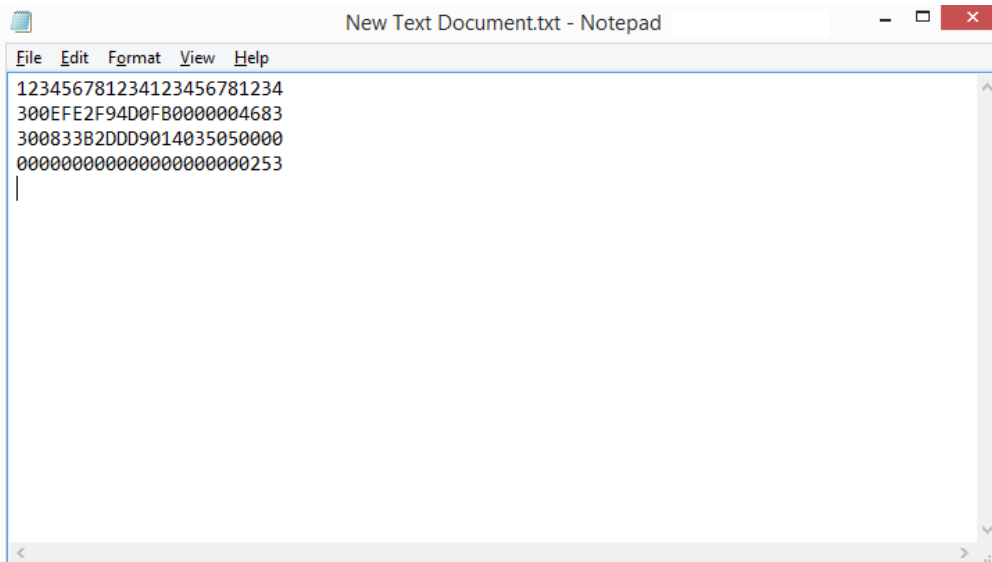
Otherwise, if the reader is already in the HID profile, you don't need any driver installation and you can start logging activity.

Launch a text editing application (or any other application accepting keyboard input).

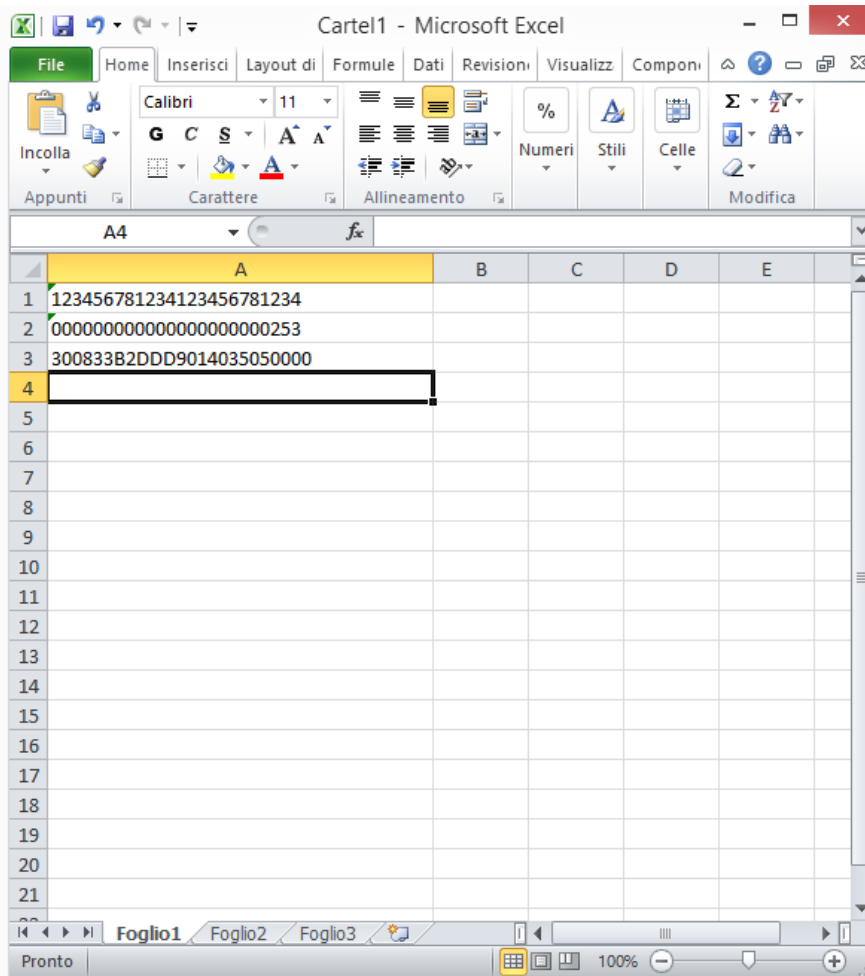
Put tags in the reader read range.

On the text editing window you will see the EPCs of the tags.

Example with a .txt file:



Example with Microsoft Excel:



The EPCs of the tags are shown in the format defined in the *HID format* of the *Configuration Menu*. The reader is sold with the factory HID format set to HEXADECIMAL. See § *HID format* page 20 to set a different HID format (HEXADECIMAL, ASCII or SGTIN14).

The reader makes an inventory tags every “scan delay” defined in the *HID scan delay* of the *Configuration Menu*. The reader is sold with the factory scan delay set to 500ms. See § *HID scan delay* page 20 to set a different value in the range 0÷99999 ms.

Note that if you want to change the active profile or access the reader configuration menu, you must remove the tags in the read range of the reader to stop the reader editing activity!

5 READER UPGRADE

Firmware Upgrade

The Tile R1250I firmware upgrade can be managed via USB. You need the Tile Upgrade Tool and the R1250I firmware image available for free at the [Tile R1250I web page](#), *Downloads* section or in [Software & Firmware](#) area.

In order to upgrade the firmware, follow the steps described below:

1. Remove the 4 screws on the back of the reader's case (see the picture below).



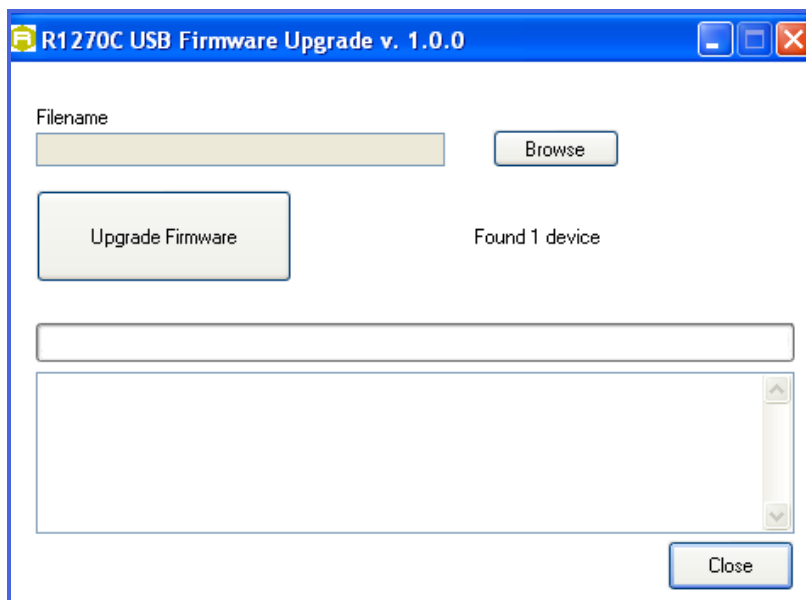
2. Connect to the USB port the evaluation board with the Quark Up reader installed (the R1270CEVB evaluation board is the one circled in red in following picture).



3. Press the reset switch on the evaluation board (SW3).
4. With SW3 pressed, press the BSL_SEL switch on the evaluation board (SW2).
5. Release SW3.
6. Release SW2 within 1s respect to SW3.
7. Open the FW upgrade program.
8. Click on Next button.

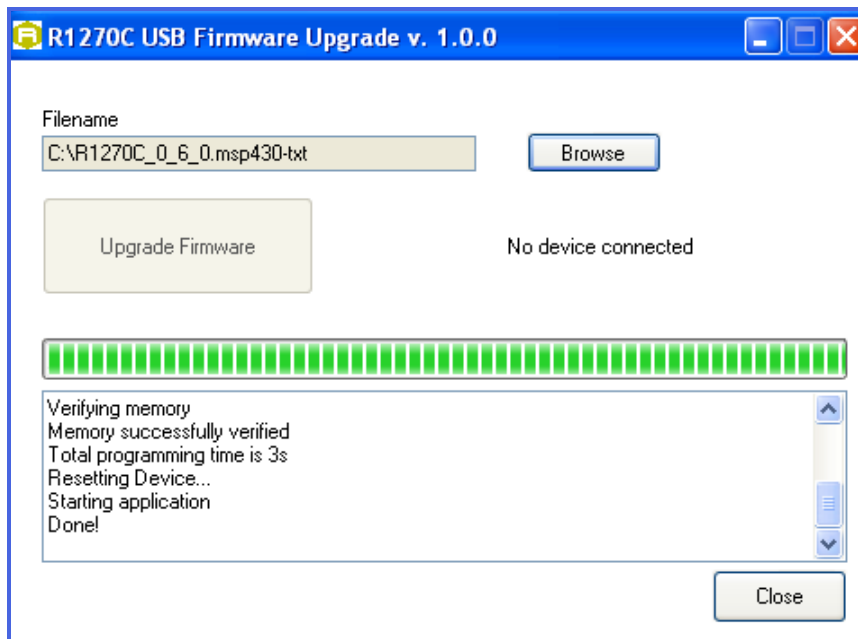


9. In the window you will see the message "Found 1 device" (if the message is "No device connected" repeat the points 3, 4, 5 and 6).



10. Select the FW image file by clicking on "Browse" button.
11. Click on "Upgrade Firmware" button and wait for the upgrade to be completed.

- At the end of procedure, if the upgrade has been successfully performed, you will see the messages reported in the image below and the module is ready for normal operation:



6 TECHNICAL SPECIFICATIONS

Technical Specifications Table

Frequency Band	865.600÷867.600 MHz (ETSI EN 302 208) (Mod. R1250IE) 902÷928 MHz (FCC part 15) (Mod. R1250IU)
RF Power	Programmable in 18 levels (1dB step) from 8 dBm ERP to 25 dBm ERP (Mod. R1250IE) Programmable in 18 levels (1dB step) from 8.5 dBm ERP to 25.5 dBm ERP (Mod. R1250IU)
Output power accuracy	+/- 1dB
Antenna	Integrated Circular Polarized Antenna
Frequency Tolerance	±10 ppm over the entire temperature range
Number of Channels	4 channels (compliant to ETSI EN 302 208 v.3.1.1) (Mod.R1250IE) 50 hopping channels (compliant to FCC part 15.247) (Mod.R1250IU)
Standard Compliance	EPC C1G2/ISO 18000-6C
User Interface	Red LED: Power Blinking Green LED: Tag detection
Connectivity	Mini USB type B plug connector USB 2.0 Full Speed (12Mbit/s) device port Must be connected to two High-power USB Type A ports (500 mA @ VBUS) Virtual COM port parameters: - Baudrate: up to 115.200kbps - Databits: 8 - Stopbits: 1 - Parity: none - Flow control: none HID profile available
Dimensions	(W)125 x (L)125 x (H)25 mm ³ (4.92 x 4.92 x 0.98 inch ³)
Electrical Power	5 V ± 5% - DC bus powered (USB) Max 650 mA
Operating Temperature	-10 °C to +55 °C
Weight	220g max.
Length of USB cable	1 m

Tab. 6.1: Tile R1250I Technical Specifications



Warning: The RF settings must match the country/region of operating to comply with local laws and regulations. The usage of the reader in different countries/regions from the one in which the device has been sold is not allowed.

Reader – Tag Link Profiles

The Tile R1250I reader supports different modulations and return link profiles according to EPC Class1 Gen2 protocol. In the following table are reported all profiles that have been tested for the compliance with ETSI and FCC regulations.

Link profile #	Regulation	Modulation	Return Link
0	ETSI - FCC	PR-ASK; f=40kHz	FM0; f = 40kHz
1	ETSI - FCC	PR-ASK; f=40kHz	Miller (M=4); f = 256kHz
2	ETSI	PR-ASK; f=40kHz	Miller (M=4); f = 320kHz

Tab. 6.2: Tile R1250I Reader to tag link profiles

Radiation Patterns

The radiation patterns of the Tile R1250IE are shown in the following figures:

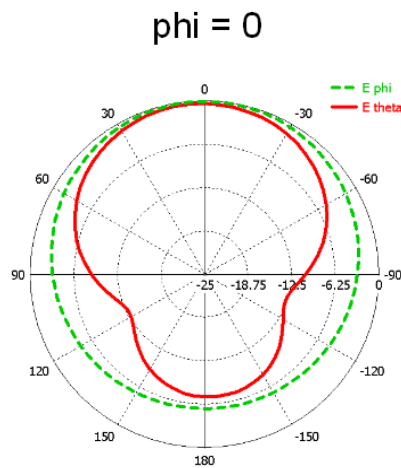


Fig. 6.1: Tile R1250IE Radiation pattern H plane

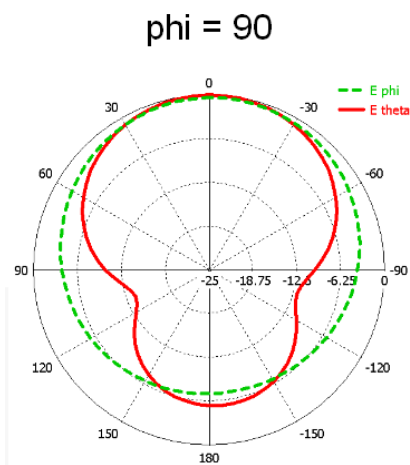
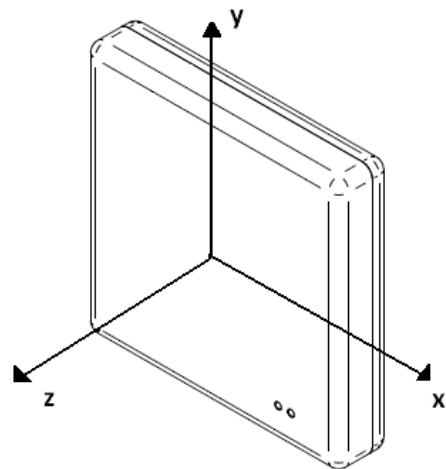


Fig. 6.2: Tile R1250IE Radiation pattern V plane



The radiation patterns of the Tile R1250IU are shown in the following figures:

$\phi = 0$

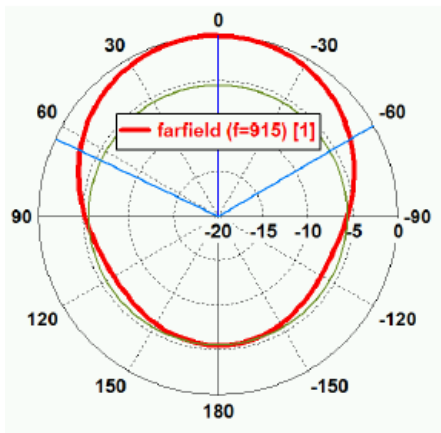


Fig. 6.3: Tile R1250IU Radiation pattern H plane

$\phi = 90$

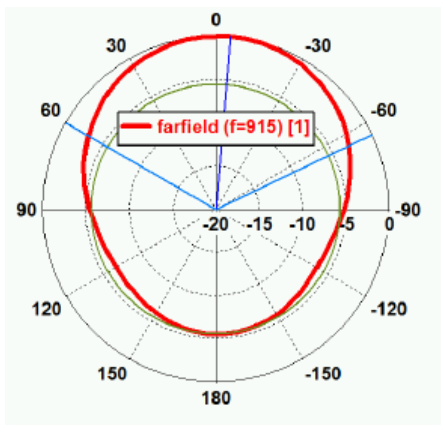
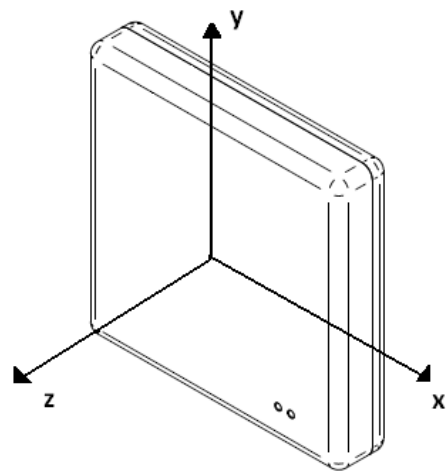


Fig. 6.4: Tile R1250IU Radiation pattern V plane



7 REGULATORY COMPLIANCE

FCC Compliance

This equipment has been tested and found to comply with the limits for a Class B digital device, pursuant to Part 15 of the FCC Rules. These limits are designed to provide reasonable protection against harmful interference in a residential installation.

This equipment generates uses and can radiate radio frequency energy and, if not installed and used in accordance with the instructions, may cause harmful interference to radio communications. However, there is no guarantee that interference will not occur in a particular installation. If this equipment does cause harmful interference to radio or television reception, which can be determined by turning the equipment off and on, the user is encouraged to try to correct the interference by one of the following measures:

- a. Reorient or relocate the receiving antenna.
- b. Increase the separation between the equipment and receiver.
- c. Connect the equipment into an outlet on a circuit different from that to which the receiver is connected.
- d. Consult the dealer or an experienced radio/TV technician for help.

This device complies with Part 15 of the FCC Rules. Operation is subject to the following two conditions: (1) This device may not cause harmful interference, and (2) this device must accept any interference received, including interference that may cause undesired operation.

Any changes or modification not approved by CAEN RFID could void the user's authority to operate the equipment.

The device shall be used such that a minimum separation distance of 20cm is maintained between the reader and user's/nearby people's body.

Reference document: Test report n. R14138301 [RD1]

See § **Tile FCC Grant** page 32 for the *Tile R1250I FCC Compliance Certificate*.

CE Compliance

Reference standard:

ETSI EN 301 489-1 V2.2.0:2017

ETSI EN 302 208 V3.1.1:2017

ETSI EN 301 489-3 V2.1.1:2017

EN 55032:2015

CEI EN 55024:2013

CEI EN 60950-1:2007 +/A11:2010 +/A1:2012 +/A12:2012

CEI EN 50364:2011

See § *Tile CE Declaration of Conformity* page 31 for the *Tile R1250I CE Compliance Certificate*.

RoHS EU Directive

Tile R1250I Reader is compliant with the EU Directive 2011/65/EU on the Restriction of the Use of certain Hazardous Substances in Electrical and Electronic Equipment (RoHS2).

Tile R1250I

CE DECLARATION OF CONFORMITY

We

CAEN RFID Srl
Via Vetraia, 11
55049 Viareggio (LU)
Italy
Tel.: +39.0584.388.398 Fax: +39.0584.388.959
Mail: info@caenrfid.com
Web site: www.caenrfid.com

herewith declare under our own responsibility that the products:

WR1250IEXBAA	R1250IE - Tile - Black - Compact UHF RFID Desktop Reader (ETSI)
WR1250IEXBFL	R1250IE - Tile - Black Flanged - Compact UHF RFID Desktop Reader (ETSI)
WR1250IEXAAA	R1250IE - Tile - Compact UHF RFID Desktop Reader (ETSI)
WR1250IEXAFL	R1250IE - Tile - Flanged - Compact UHF RFID Desktop Reader (ETSI)

correspond in the submitted version to the following standards:

ETSI EN 301 489-1 V2.2.0:2017
ETSI EN 302 208 V3.1.1:2017
ETSI EN 301 489-3 V2.1.1:2017
EN 55032:2015
CEI EN 55024:2013
CEI EN 60950-1:2007 +/A11:2010 +/A1:2012 +/A12:2012
CEI EN 50364:2011

and declare under our sole responsibility that the specified products meet the principle requirements and other applicable regulations of directives 2014/53/EU (RED) and 2011/65/EU (RoHS2)

Date: 09/04/2019


CAEN RFID Srl
Via Vetraia, 11
55049 VIAREGGIO - ITALY
VAT IT 02032050466

Adriano Bigongiari (Chief Executive Officer)

On the basis of this declaration, these products will bear the following mark:



Tile R1250I FCC GRANT

TCB

**GRANT OF EQUIPMENT
AUTHORIZATION**

TCB

**Certification
Issued Under the Authority of the
Federal Communications Commission
By:**

**EMCCert Dr. Rasek GmbH
Stoernhofer Berg 15
91364 Unterleinleiter,
Germany**

**Date of Grant: 07/08/2015
Application Dated: 07/08/2015**

**CAEN RFID srl
via Vetraia, 11 - 55049 Viareggio (LU) - ITALY
Viareggio, 55049
Italy**

Attention: Adriano Bigongiarl , CEO

NOT TRANSFERABLE

EQUIPMENT AUTHORIZATION is hereby issued to the named GRANTEE,
and is VALID ONLY for the equipment identified hereon for use under the
Commission's Rules and Regulations listed below.

FCC IDENTIFIER: UVECAENRFID019
Name of Grantee: CAEN RFID srl
Equipment Class: Part 15 Class B Computing Device Peripheral
Notes: R1250IU - Tile - Compact UHF RFID Desktop
Reader

<u>Grant Notes</u>	<u>FCC Rule Parts</u>	<u>Frequency Range (MHZ)</u>	<u>Output Watts</u>	<u>Frequency Tolerance</u>	<u>Emission Designator</u>
	15B	-			

